



**WELCOME TO THE MATHER**

**DISCOVER LUXURY OF A  
DIFFERENT KIND**



Architectural rendering subject to change.



The best things in life happen  
by choice, not by chance.

---

**DISCOVER NEXTRAORDINARY™**

At The Mather, we believe in surpassing the ordinary in every way to Nextraordinary™ to surprise and delight you, to move purposefully forward, and to bring possibilities to life. Here you can live a life as extraordinary as you are.





Luxury must be comfortable,  
otherwise it is not luxury.

— COCO CHANEL —



## DISTINCTION IS IN THE DETAILS

---

Beyond its iconic style and distinctive finishes, The Mather is a transcendent place that redefines luxury urban living, offering opportunities to delight, revel, and aspire.





BAR



FINE DINING RESTAURANT



OUTDOOR PATIO

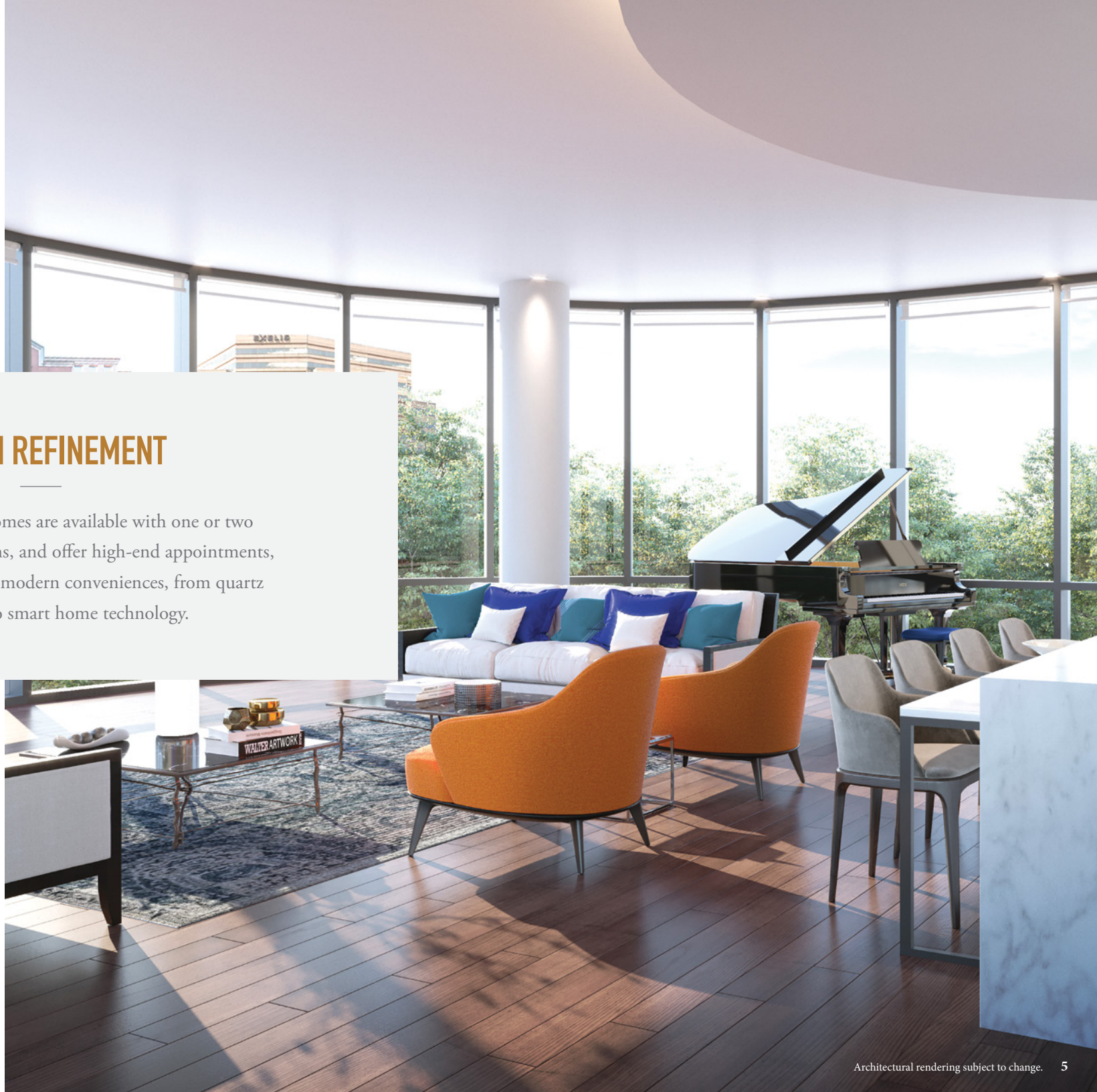


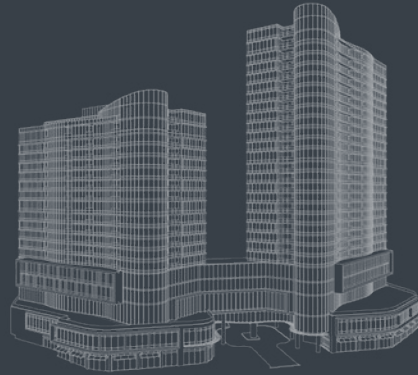
POOL



## RELISH REFINEMENT

Spacious apartment homes are available with one or two bedrooms, some with dens, and offer high-end appointments, unmistakable style, and modern conveniences, from quartz countertops to smart home technology.





## DESIGN REDEFINED

---

### SAMPLE FLOOR PLANS

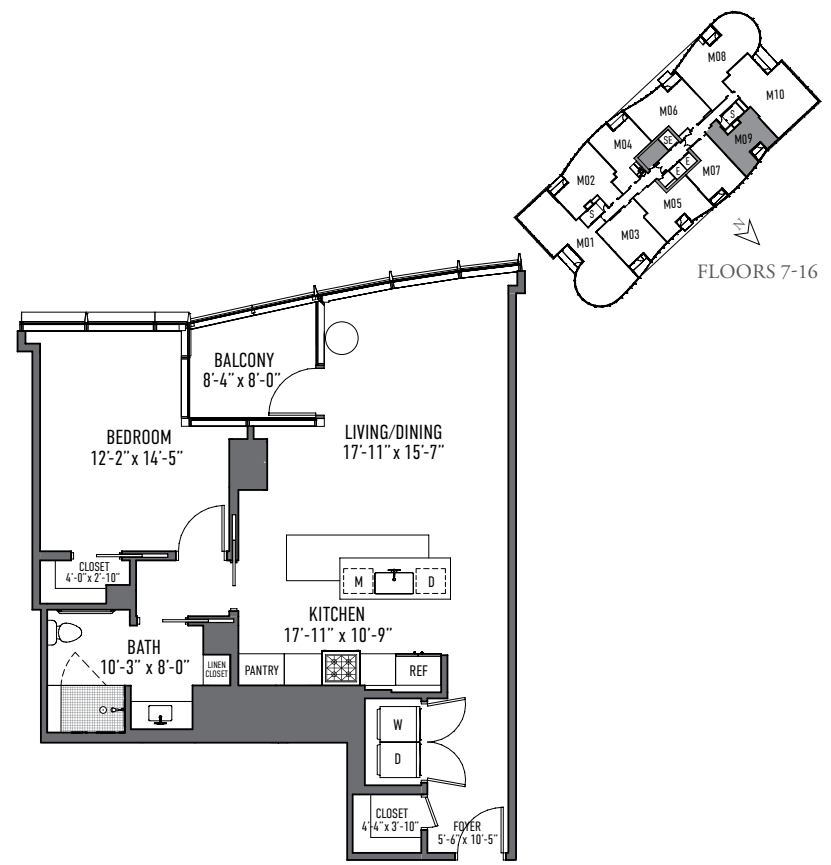
# M13

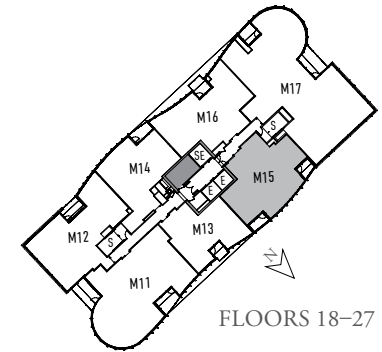
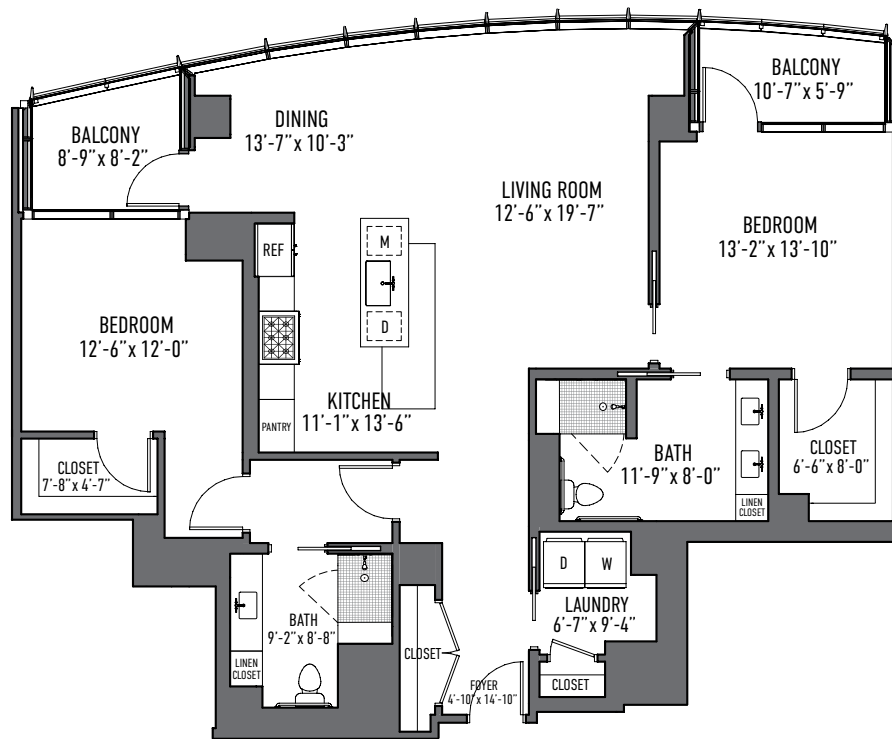
1 Bedroom + Den, 1.5 Bath  
1,094 Square Feet



# M09

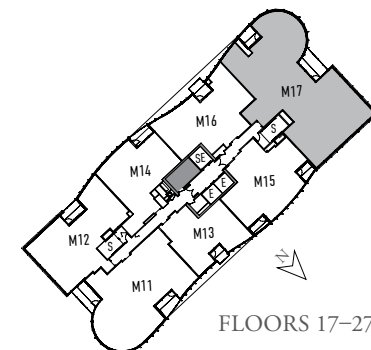
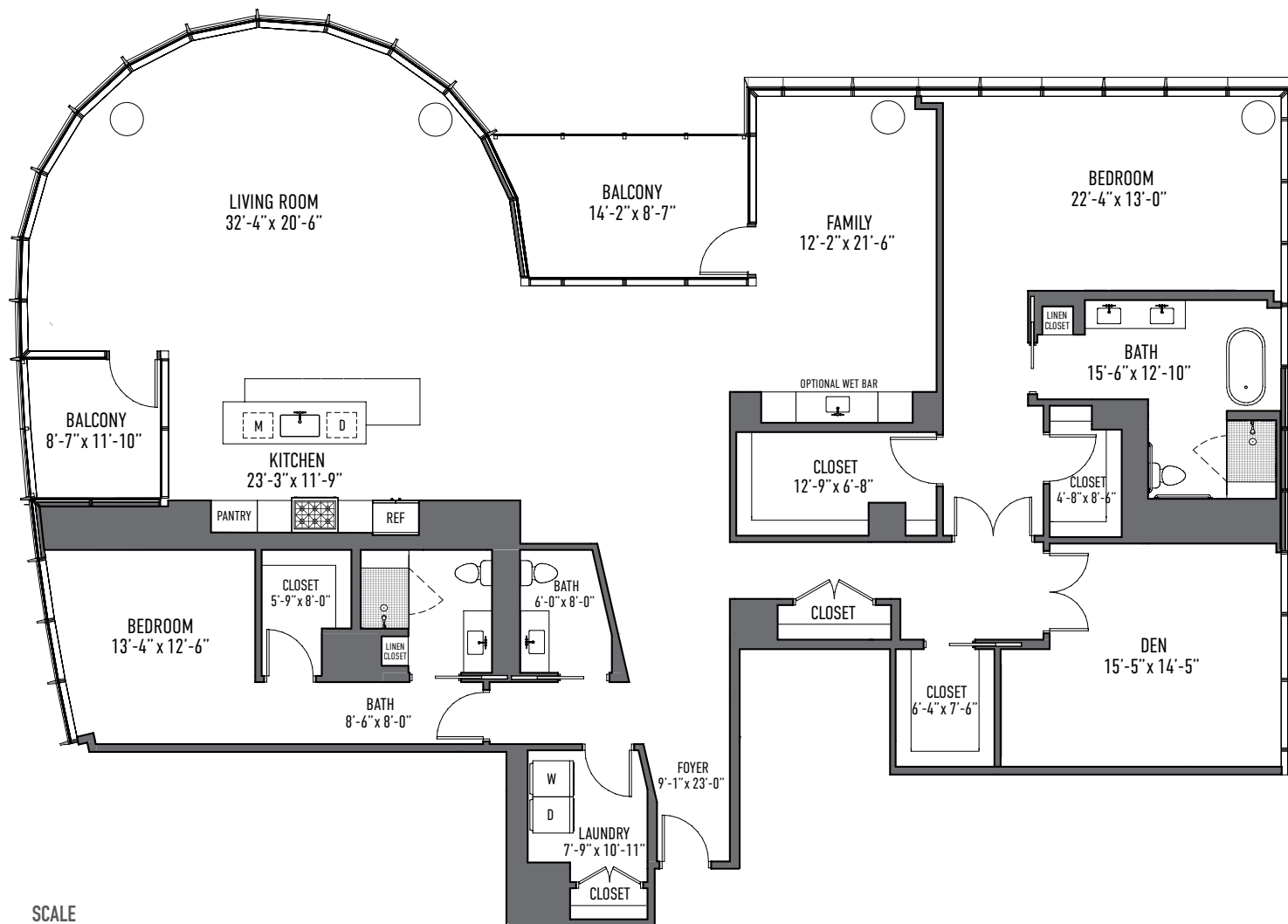
1 Bedroom, 1 Bath  
890 Square Feet

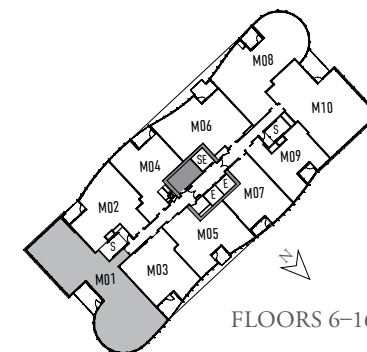




**SCALE**  
1/8 in. = 1 ft.  
0' 4' 8'







A horizontal number line with three points marked by vertical tick marks. Below the line, the points are labeled 0', 4', and 8' from left to right. The segment between 0' and 4' is shaded gray, and the segment between 4' and 8' is also shaded gray.





## DISCOVER TRUE PEACE OF MIND

---

The Mather is a place where you can maximize every moment by feeling reassured about your health and financial security. Our future-focused approach lets you fully realize the joy of planning ahead, because true peace of mind is luxury of a different kind.



# THE GOOD LIFE STARTS WITH A GREAT ADDRESS

## SPACIOUS, MODERN-LIVING FLOOR PLANS

Open, spacious floor plans offer expansive views, nine-foot ceilings in main living spaces, private balconies, and a suite of home automation features.

## TASTEFUL SELECTIONS

Multiple restaurants each designed to deliver distinct culinary experiences focused on local, seasonal, and organic foods.

## FITNESS CENTER

Fitness center contains a heated saltwater lap pool, whirlpool, sauna, and steam showers; group exercise studio; and cardio/weight training center.

## INSPIRING SOCIAL AND CULTURAL OPPORTUNITIES

38,000+-square-foot amenities level offers a host of opportunities from lectures to virtual reality classes; plus, play a game of bocce, gather around the fire pit, and much more.

## CONVENIENT LIVING

The Club Points program offers flexible restaurant dining packages; plus, housekeeping, maintenance, and landscaping services are included in the monthly fee.

## GREEN SPACES

The Mather campus borders nearly three acres, with landscaped gardens, walking paths, dog park, and more.

## EXPLORING IS EFFORTLESS

Complimentary transportation services include car valet with covered parking, daily shuttle service, and reserved town car within three miles (subject to availability).

## LIFE CENTRE

Quality care offers the comforts of home, including assisted living, memory support, and skilled nursing, as well as a choice of health care plan options.

Subject to change without notice.





## THE MATHER A MATHER RESIDENCE

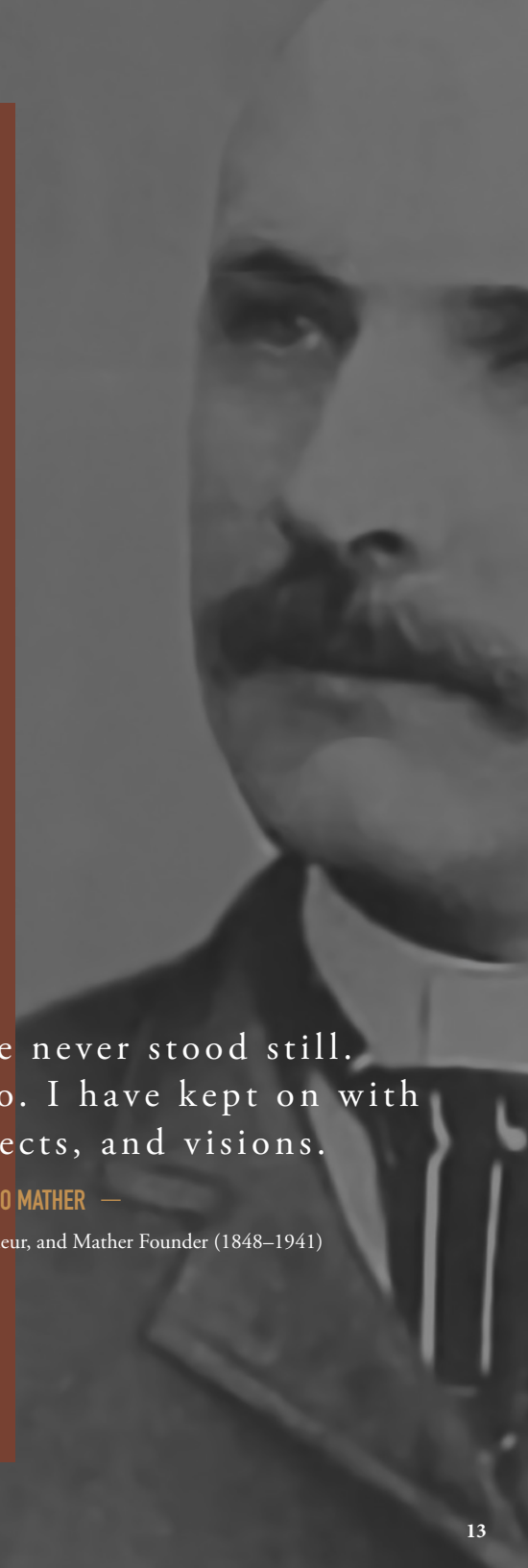
---

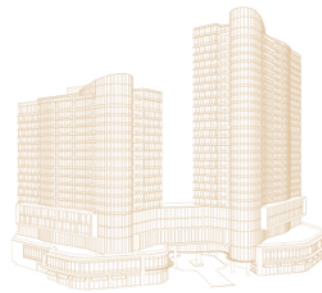
Mather has served older adults for more than 65 years, igniting passions and turning ordinary moments into extraordinary ones. Mather encourages the pursuit of what's next by creating Ways to Age Well<sup>SM</sup> through our residences, programs, and research institute.

In my life, I have never stood still.  
We Mathers never do. I have kept on with  
new ideas, projects, and visions.

— ALONZO MATHER —

Humanitarian, Inventor, Entrepreneur, and Mather Founder (1848–1941)





**ONE DAY, OR DAY ONE?**  
**THE CHOICE IS YOURS.**

